



# WELCOME TO THE CMS VIKINGS BANDS!

Dear Parents and Students,

My name is Leigh Morgan and I am so excited to welcome you to the Central Middle School Band family! I am looking forward to a fun-filled year of musical education, growth, and creativity. Thank you for taking the time to review this important document. I am still finalizing and planning events for us this school year. Please mark your calendar with the possible dates included in this handbook and I will keep you updated on their status as we progress through the school year.

You, as parents, are an integral part of the band program and every one of you has something great to offer in support of our students. You are always welcome in our classroom at any time. Please volunteer your time, come out and see what your child is learning, or just continue to encourage your child to practice, practice, practice!

The lifelong benefits your child will obtain through music expand beyond the classroom and are transferable to every other academic subject. If you are interested in learning more about the benefits of music education, I would encourage you to visit: [www.broaderminded.com](http://www.broaderminded.com).

Please feel free to contact me at any time with questions, concerns, or comments. You will find my contact information attached. Again, welcome to the CMS Vikings Bands family and I look forward to meeting you!

Musically yours,

Leigh Morgan  
Director of Bands  
Central Middle School



# LEARNING EXPECTATIONS

## Be Prepared

Instrument maintenance is completed on a regular basis.

Have all needed supplies materials.

Practice!



## Participation

Be focused

Read Carefully & Follow Directions

Give 100%

Be an active participant.

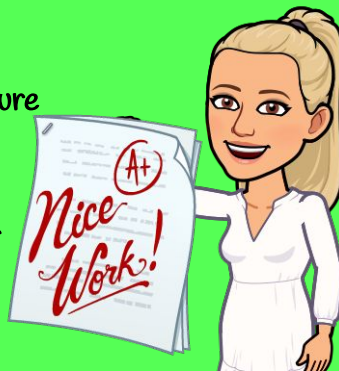


## Practice Tips

Use good practice habits.

Make sure your posture & embouchure are correct at all times.

Use a metronome & tuner with your practice if possible.



Tap your toe along with the beat.

Count & Clap, Tizzle – each song – Go slow at first!

Break the piece down into small sections. (1 phrase or measure at a time – maybe even just 2 notes at a time!)

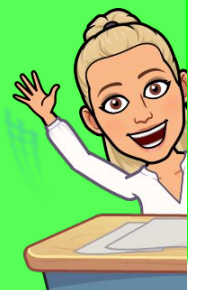
## Communication

When you run across something difficult in your practice or work, write down your question so you can remember what to ask when you speak to Ms. Morgan

Make sure you are speaking with Ms. Morgan each week.

If you do not have access to the technology we are using, please let Ms. Morgan know so she can plan accordingly in advance of class.

ME  
ME  
ME



# GRADING

## ENSEMBLE SKILLS, INSTRUMENT CARE

Participation in class and/or at home

Practice Logs (as needed)

Demonstration of Ensemble Skills

Bell Ringers / Exit Tickets / Class Discussions

Instrument Care & Maintenance

**40%**

## CLASSWORK, HOMEWORK, PROJECTS

Music Theory

*(Vocabulary, Note Naming, Rhythm, etc.)*

Music History

*(Time Periods, Composers, Cultures, etc.)*

Other Assignments

**30%**

## QUIZZES, TESTS, PERFORMANCES

Written Tests

*(Music Theory, Music History, etc.)*

Playing Tests

*(Scales, Concert Music, Method Book #'s, Rhythms, etc.)*

Performances

**30%**



# CONCERTS AND PERFORMANCES

Every musician is important to the sound of the band, so it is imperative that every student performs in concerts. Concert dates are provided as far in advance as possible so that arrangements can be made for transportation and to take family plans into account. **All excuses for missing a performance, barring an emergency, need to be made within the first month of school.** If an emergency arises and you must miss a concert, proper documentation will be requested. Music is a performing art, so the most important part of the band experience is to perform! **Concerts are rewarding for students and fun for the family, so please make every possible effort to attend.**

Concerts are like final projects. **If a student misses a concert, he or she must make up the points.** Because performance is such an important part of being a musician, students will be required to perform a solo in front of the class. This will help the student to improve their performance skills and provide an alternative assignment as close as possible to the original requirement. Guidelines will be made available when absence requests are received.

## PERFORMANCE DRESS

### Concert Band Attire:

- Central Middle School Polo/T-shirt (information will be sent home)
- Black Pants (no jeans)
- Black Shoes (preferred)

### Pep Band Attire:

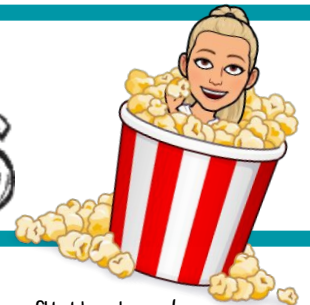
- Central Middle School Polo or Pep Band Shirt
- Jeans
- Tennis Shoes



*If you have difficulty getting these items, please speak with Ms. Morgan.*



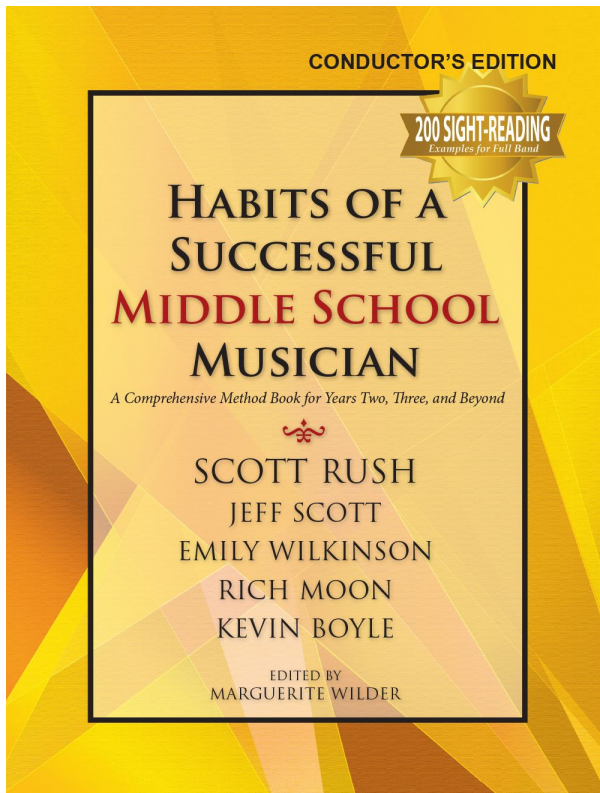
## FUNDRAISERS



All students are expected to participate in fundraisers. The money earned is used to benefit the band as a whole, so we should all work to earn it. Some ways this money is spent are: instrument repairs, purchase of new instruments, purchase of music, purchase of music stands, purchase of materials.

As of now, we are planning to hold our annual fruit sale and we will be having a popcorn sale for the second semester. I will keep you informed of any changes and send home information regarding these fundraisers as they approach.

# REQUIRED MATERIALS

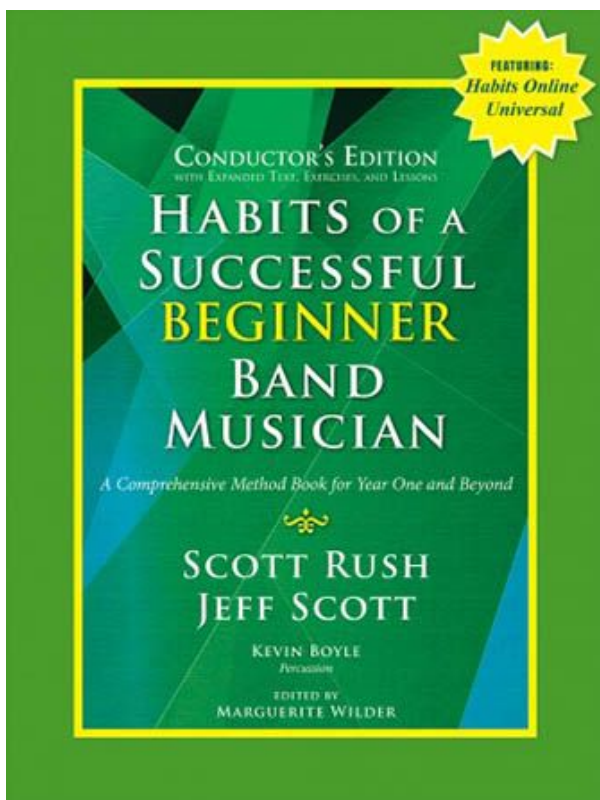


## 7th & 8th Grade Bands

Students will be using this method book for the 2023 - 2024 school year. Habits of a Successful Middle School Musician can be purchased online or at a music store for \$9.95.

Please make sure you purchase the book that corresponds to your particular instrument.

Flute Oboe Bb Clarinet  
Bb Bass Clarinet Eb Alto Sax  
Bb Tenor Sax Eb Baritone Sax  
Bb Trumpet Baritone TC  
Baritone BC Trombone Tuba  
Percussion



## 6th & 7th Grade Bands

Students will be using this method book for the 2023 - 2024 school year. Habits of a Successful Beginner Band Musician can be purchased online or at a music store for \$10.95.

Please make sure you purchase the book that corresponds to your particular instrument.

Flute Oboe Bb Clarinet  
Bb Bass Clarinet Eb Alto Sax  
Bb Tenor Sax Eb Baritone Sax  
Bb Trumpet Baritone TC  
Baritone BC Trombone Tuba  
Percussion

# REQUIRED MATERIALS



Clarinets – Box of Rico or Vandoren brand reeds (6th grade – size 2.5)

Saxophones – Box of Rico or Vandoren brand reeds (6th grade – size 2.5)

Oboe – Magic Reed Handmade Intermediate Medium Light Standard (try to have at least 2 reeds)

(boxes end up being cheaper than purchasing only a few reeds at a time & you will need to rotate your reeds)

## All Woodwind & Brass Instruments

You will need to have a cleaning kit for your specific instrument. If you already have one, you do not need to get another unless you are missing or have broken items. It is important that you are able to properly care for your instrument.

## All Brass Instruments

You will need to make sure you have valve oil and slide grease. Trombones, you will have slide oil instead of valve oil. French Horn, you will have rotar oil instead of valve oil. These are required in order for your instrument to play properly.

## Percussion

You need to have one pair of concert snare drum sticks & one pair of mallets for the bells. Please check your sticks and make sure they do not need to be replaced.

Innovative Percussion IP1 Concert Snare Sticks  
Standard \$9.99

Innovative Percussion Fundamental Series Keyboard Mallets / Medium-Hard Xylophone Bell Birch \$12.99

# MUSIC COMPANIES

## Top Hat Music

1009 Scenic Parkway  
Chesapeake, VA 23322

(757) 485-3934

[www.tophatmusic.com](http://www.tophatmusic.com)

A representative from Top Hat Music comes out of the school weekly. Most repairs can be done onsite instead of having to be sent off. You can also call the store, place an order and have it brought out to the school for your student instead of having to pay shipping and wonder if you got the correct item.

## Fuller's Music

2310 Trent Road  
New Bern, NC 28562

(252) 638-2811

[www.fullersmusic.com](http://www.fullersmusic.com)

A representative from Fuller's Music comes out to the school weekly. Small repairs can be done onsite, but others will be sent to the store in New Bern. You can call the store or go online, place an order and have it brought out to the school for your student instead of having to pay shipping and wonder if you go the correct item.



We will be using Google Classroom for the large majority of our assignments. Please check your email for your invite to the correct google classroom so you can join.

Parents, if you provide me with your email address I will add you to your child's account so that you can check their assignments and see whether or not they have been completed.

You can expect to have a short exit ticket (homework) every day. These help us to review the concepts taught in class and give me the ability to see who needs help. Some examples of exit tickets are:

- Note Naming
- Rhythm Counting
- Musical Vocabulary
- Musical Symbol Identification
- Quizizz Lessons & Assignments
- Listening Exercises

**\*\*We do use cell phones/laptops/electronic devices in band at the beginning and end of class for review sessions & to complete exit tickets if time allows. Students are only to have devices out in class with permission from the teacher to complete an assigned task. If devices are out at other times without permission consequences will follow the CMS Handbook.\*\***



# CONTACT INFORMATION



252-357-0470 ext. 248 (CMS)



morganrl@gatescountyschools.net



Remind Codes for each class are listed below. Please sign up for Remind so we can communicate effectively!

Beginning Band - @6ke9kk  
Concert Band - @2bghgg



<https://www.facebook.com/cmsvikingbands>  
@cmsvikingbands



@cmsvikingbands



[www.cmsvikingbands.weebly.com](http://www.cmsvikingbands.weebly.com)

# IMPORTANT DATES

## Christmas Concert

Students in grades 6–8 will present a Christmas Concert for parents, family and community members in the gym at CMS. Students are to wear Christmas or CMS Bands attire. Students should arrive by 6:15pm to warm up and prepare. The concert will start at 7:00pm in the CMS Gym!

*Tentative Dates : Tuesday, December 5th or Thursday, December 7th*



## Gatesville Christmas Parade

Students in the 7th and 8th grade bands will participate in the our annual Christmas Parade in Gatesville this coming December. Students are to wear Christmas or CMS Bands attire. Have fun and dress up! You can also decorate your instrument!

*Tentative Date : Saturday, December 9th*

## All District Registration, Auditions & Clinic Weekend

Students in grades 7 & 8 will have the opportunity to audition for the Eastern District All District Band. This is not a required event, however it is strongly suggested that students audition. This is an amazing opportunity and experience. Stay tuned for more details.

*All District Registration Fee Due (\$10) – Friday, December 1st*

*All District Auditions – Saturday, January 13th*

*All District Clinic Weekend – Friday & Saturday, February 2–3*



## Spring Concert & Music in the Parks

Students in grades 6–8 will present a Spring Concert for parents, family and community members AND participate in Busch Gardens Music in the Parks! Students are to wear CMS Bands attire. Stay tuned for more details.

*Tentative Dates : Spring Concert – Thursday, May 2nd  
Music in the Parks – Friday, May 10th or Saturday, May 11th*

## Band Party

Hopefully, this year we will also be able to reinstate our annual BAND PARTY! This is for all students in 6–8 band at CMS. There will be a small fee (usually \$10) to cover the cost of food and drinks for each student. We will eat, play games, watch a movie and celebrate a successful school year in BAND!

*Tentative Date : May/June (TBA)*

